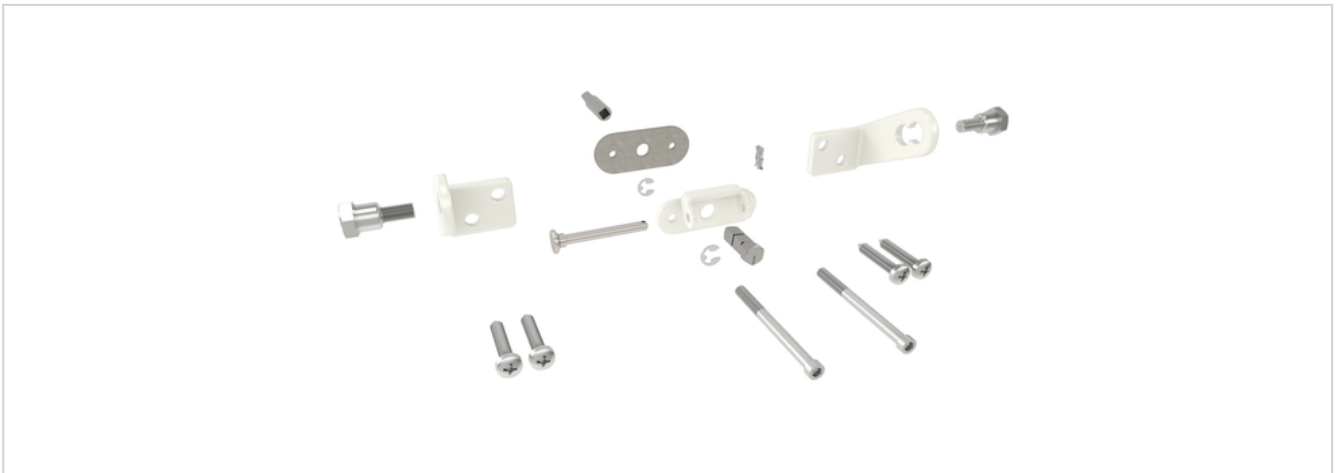


Bracket set for VCD drives



# VCD-BS011-VFO (WH)



## Performance features

- + For mounted installation of VCD chain drives designed for roof windows
- + Instructions for installation can be found in the D+H application drawings and product information
- + Bracket set optimised for installation on the window profile of the profile manufacturers:
  - Roto® R6, R8
  - Velux® GGU/GGL, GPU/GPL, GHU/GHL

# Technical data

VCD-BS011-VFO (WH)

## Sash bracket

<b>Material</b>	V2A stainless steel
<b>Surface</b>	Tumbled
<b>Colour</b>	White (~ RAL 9016)

## Frame bracket

<b>Material</b>	V2A stainless steel
<b>Surface</b>	Tumbled and powder-coated
<b>Colour</b>	White (~ RAL 9016)
<b>Art. No.</b>	25.BAA.KS