

Smoke Damper

Certified NSHEV Damper

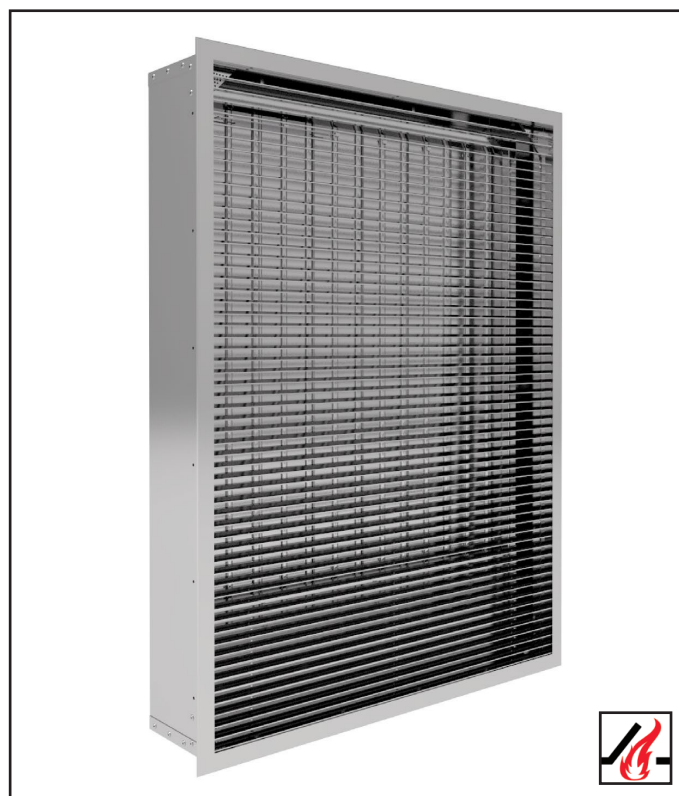
The damper is designed for natural and mechanical smoke ventilation applications.

Particularly suited for mechanical smoke extraction shafts in multi-storey buildings.

The unit is installed within the wall between a lobby or corridor into a vertical smoke shaft.

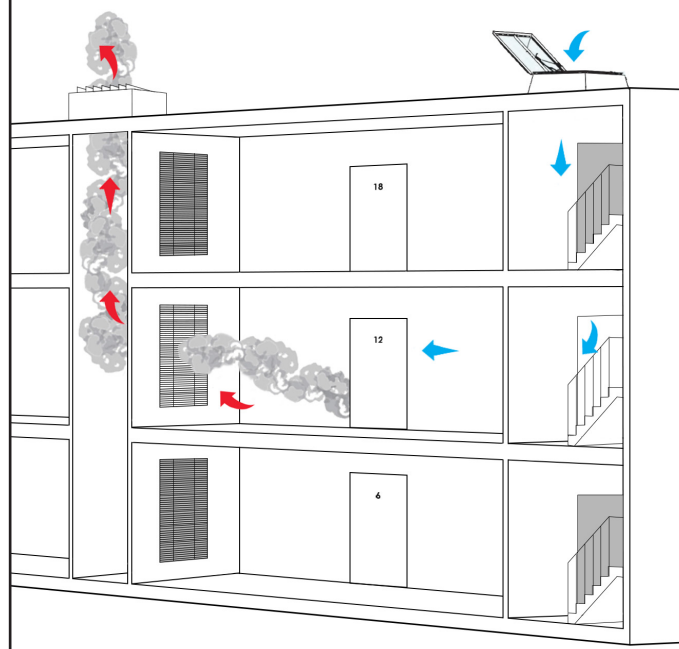
- Comprises of 3 units; damper, removable sleeve and grille
- EN 12101-8, EN 1366-2 and EN1366-10 certified
- Multiple sizes available
- For natural and mechanical smoke ventilation
- Concealed drive with easy maintenance access
- Easy-fit grille as standard

Smoke Damper systems ensure escape routes are kept free for evacuation and provide clear access for the emergency services.



Example of application in case of fire:

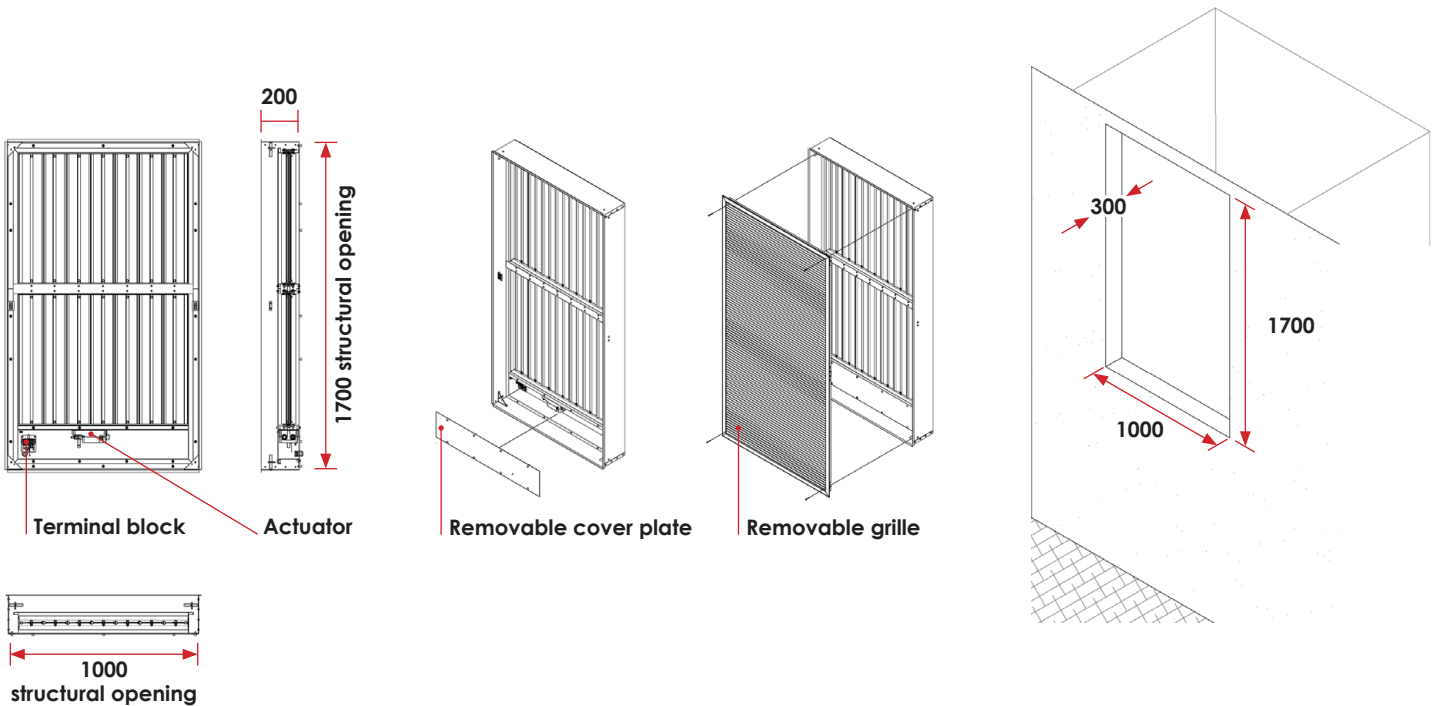
- Damper on affected floor opens and fan starts. All other dampers remain closed.
- Chimney effect causes smoke and gas to be drawn up and out via the shaft.
- Fire door and head of stair NSHEV open to bring in fresh air.



Smoke Damper

Product dimensions - typical 1m² geometric free area solution 1000 x 1700 (mm)

A large range of standard sizes are available.



Technical data

Certification	EN 1366-2 & 1366-10 & EN 12101-8
Material	Frame, sleeve and blades from galvanised mild steel. Aluminium grille. Standard PPC RAL 9010 (other colours on request)
Maximum duct velocity	20 m/s
Maximum system pressure	500Pa
Operation	10,000 cycles
Sizes	From 519 x 400 mm up to 1013 x 1998 mm

Email us at enquiry@dh-partner.co.uk for more information.