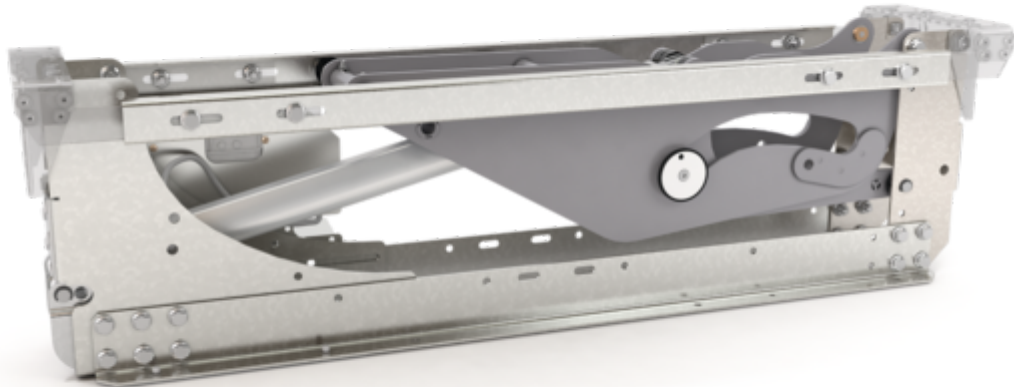
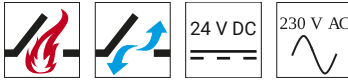


# SDS 3-1000-5



With an opening angle of up to 170° and a force/power of up 2200 N, this skylight system is virtually unbeatable. Including emergency unlocking. Find out more now!

## Performance features

- + For opening and closing skylights for ventilation and smoke extraction applications up to an opening angle of 170°
- + Outstandingly quiet drive for convenient daily ventilation
- + Up to 2200 N of max. system load (skylight incl. snow load) thanks to optional power pack
- + Maximum coupling weight of 90 kg (max. opening angle of 120°)
- + Electronic system for SA and SZ signalling that can have modules added to it, BSY+ (synchronous operation of 2 systems) and interface to the ACB Gateway
- + Maximum opening angle can be adjusted using D+H SCS software
- + SDS 3-1000 basic system for flexible use in a skylight at an installation clearance dimension of 1000 mm - 1200 mm
- + Emergency unlocking already integrated in basic system
- + System that can be expanded using modules with customer-specific installation sets and dimensions (up to 2 m)
- + Easy installation thanks to pre-installation of the brackets and convenient mounting from above
- + Mechanical locking mechanism for increased wind loads and burglary protection incl. emergency unlocking (optional)

# Technical data

## SDS 3-1000-5

|                                       |                                     |
|---------------------------------------|-------------------------------------|
| Supply                                | 230 V AC / +10 % ... -15 % / 147 VA |
| Max. OPENING force incl. snow load    | 2200 N                              |
| Max. CLOSING force                    | 500 N                               |
| Nominal locking force on the lift arm | 3400 N *                            |
| Service life                          | 11000 double strokes **             |
| OPEN running speed                    | 60 s                                |
| CLOSED running speed                  | 60 s                                |
| Wind load class                       | 1500 Pa ** ***                      |
| Snow load class                       | 750 Pa ** ***                       |
| Type of protection                    | IP 54                               |
| Temperature range                     | (-25 °C ****) -5 °C ... +75 °C      |
| Fire resistance                       | B300 (30 min / 300 °C)              |
| Connection                            | Electronic box, screw terminals     |
| Weight                                | 18.5 kg                             |
| Art. No.                              | 27.903.04                           |

\* Force at the outer edge of the skylight depends on the skylight dimensions

\*\* Developed in accordance with EN 12101-2

\*\*\* Values for skylight size of 2.25 m<sup>2</sup> (1.5 m x 1.5 m) at a skylight weight of 50 kg.

The value changes in proportion to changes in the skylight size and weight.

The skylight must be suitable for the loads.

\*\*\*\* On request

## Dimensions

All specifications in mm

